

DRAWINGS ARE THE SOLE PROPERTY OF BD CONSTRUCTION, INC./KEARNEY, WHO BY THE COMMON LAW AND STATUTES OF THE STATE OF NEBRASKA, AND ANY REPRODUCTION OR TRANSMITTAL THEREOF WITHOUT THE WRITTEN CONSENT OF BD CONSTRUCTION IS STRICTLY PROHIBITED.

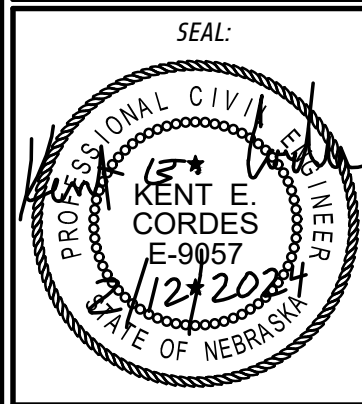
**BD Construction**  
 1212 20th Street  
 Kearney, NE 68848  
 TEL: 306.234.1836

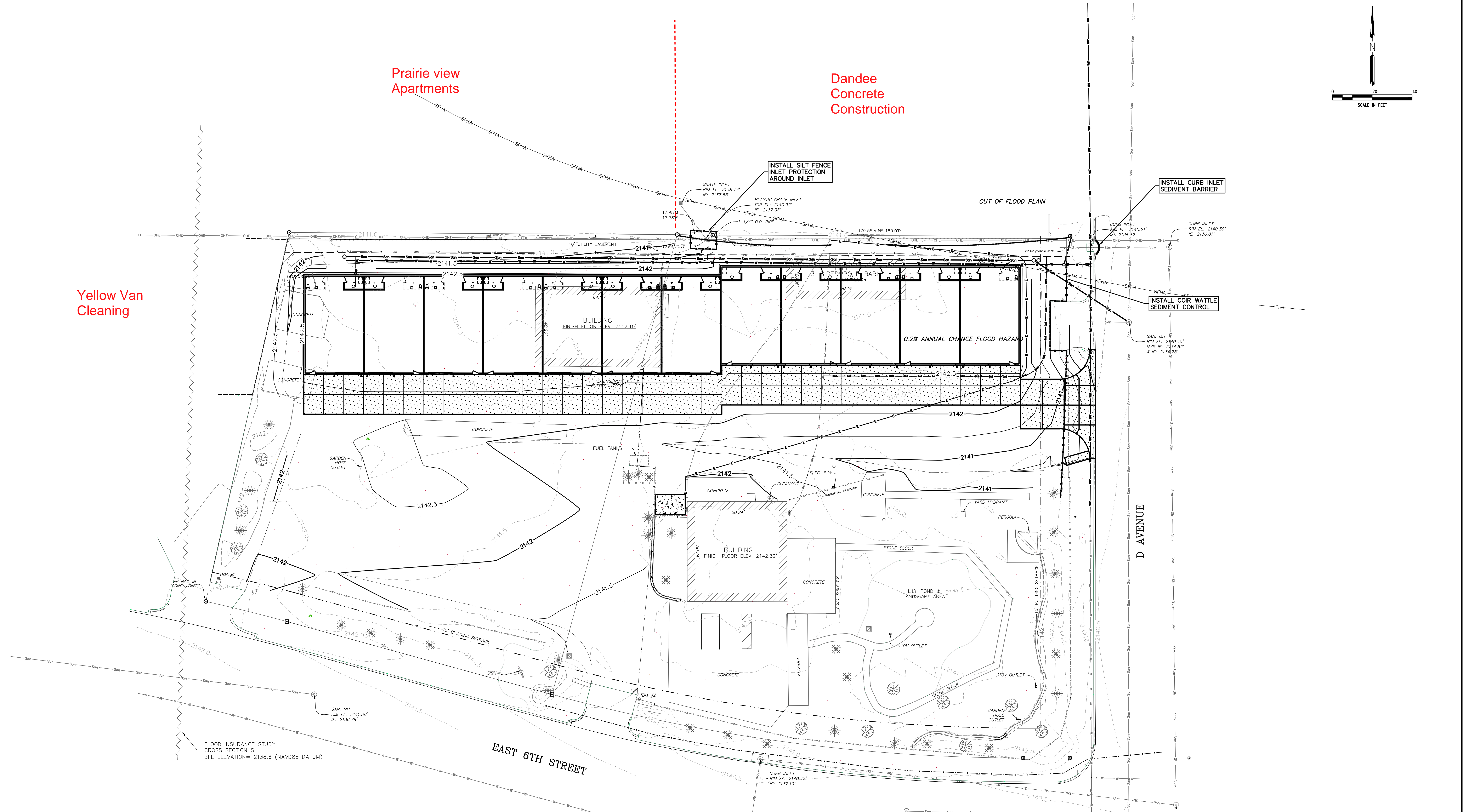
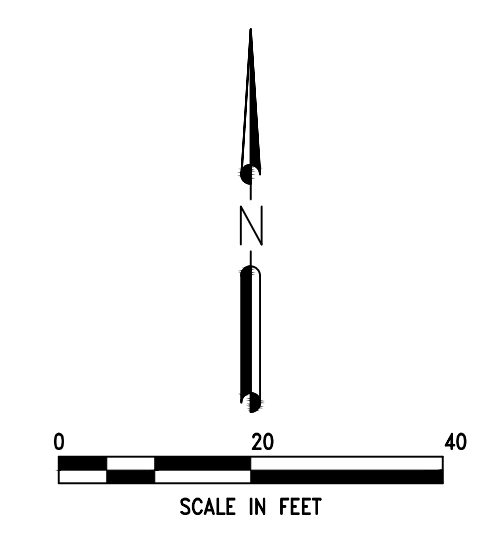
REVISIONS	BY

WHAT'S THE BD? Visit Us At [www.bdconstruction.com](http://www.bdconstruction.com)

MASONRY UNLIMITED WAREHOUSE SPACE

# EROSION CONTROL PLAN

PROFESSIONAL CIVIL ENGINEER  
 SEAL:   
 PROJECT NO: 23-03-050  
 DRAWN BY: L. AMEN  
 DATE: 2-12-2024  
 SHEET NO: **C3.0**



Prairie view Apartments

Dandee Concrete Construction

Yellow Van Cleaning

- GENERAL EROSION AND SEDIMENT CONTROL NOTES:
1. VEGETATION SHALL BE REMOVED FROM WITHIN THE LIMITS OF GRADING. IF POSSIBLE, LEAVE VEGETATED BUFFER STRIP TO NEIGHBORING PROPERTIES.
  2. MAINTAIN SEDIMENT CONTROL STRUCTURES UNTIL FINAL SITE STABILIZATION IS ACHIEVED.
  3. INSTALL ADDITIONAL SEDIMENT AND EROSION CONTROL MEASURES WHEN NECESSARY TO PREVENT SEDIMENT FROM MIGRATING ON TO ROADS OR ADJACENT PROPERTIES.
  4. IF STRIPPINGS ARE STOCKPILED ON SITE, INSTALL ADDITIONAL CONTROL MEASURES AROUND THE STOCKPILE.
  5. INSPECT ALL SEDIMENT AND EROSION CONTROL MEASURES WEEKLY AND AFTER EVERY RAINFALL EVENT OF 0.5 INCHES OR MORE IN 24 HOURS. PERFORM ALL NECESSARY REPAIRS AND MAINTENANCE IMMEDIATELY.
  6. TAKE NECESSARY MEASURES TO CONTROL DUST AND EROSION. REPAIR ANY DAMAGE FROM DUST OR EROSION/SEDIMENT ON THE SITE AND NEIGHBORING SITES.
  7. INSTALL SEDIMENT AND EROSION CONTROL MEASURES PRIOR TO BEGINNING EARTH MOVING OPERATIONS.
  8. USE EXISTING PAVED DRIVES ONTO EXISTING CRUSHED ROCK PARKING AREA FOR SITE ACCESS FROM THE SOUTH.
  9. THIS PROJECT FALLS UNDER THE PURVIEW OF THE GENERAL STATE-WIDE NPDES PERMIT. COMPLY WITH ALL PERMIT CONDITIONS.